



# CALENDAR YEAR 2022 CNEL NOISE CONTOURS

**Santa Monica Municipal Airport**

**May 2023**



# Calendar Year 2022 CNEL Noise Contours

May 2023

**SANTA MONICA MUNICIPAL AIRPORT**

3223 Donald Douglas Loop South

Santa Monica, CA 90405

310-458-8591

[www.santamonicaairport.org](http://www.santamonicaairport.org)

Prepared for:



Prepared by:



**CONTENTS**

- 1 Introduction ..... 2
- 2 Methodology ..... 2
  - 2.1 Background ..... 2
  - 2.2 Noise Modeling ..... 2
- 3 Existing Airport Noise Exposure ..... 3
  - 3.1 Background ..... 3
  - 3.2 Operations Data ..... 5
  - 3.3 Fleet Mix Data ..... 7
  - 3.4 Runway and Flight Track Utilization ..... 8
  - 3.5 Noise Monitoring Data ..... 9
  - 3.6 CNEL Noise Contours ..... 13
- 4 Historical Noise Monitoring Data ..... 14
- 5 References ..... 14

**FIGURES**

- Figure 3-1. Noise Monitor Terminal (NMT) Locations ..... 4
- Figure 3-2. Calendar Year 2022 Versus 2022 Operations by Aircraft Category ..... 5
- Figure 3-3. Breakdown of Operations ..... 6
- Figure 3-4. Operations for Top 5 Aircraft Types Per Aircraft Category ..... 7
- Figure 3-5. Operations by Hour of Day, Evening, and Night ..... 8
- Figure 3-6. Departure Flight Track Density Plot ..... 10
- Figure 3-7. Arrival Flight Track Density Plot ..... 11
- Figure 3-8. Circuit Flight Track Density Plot ..... 12
- Figure 3-9. Calendar Year 2022 CNEL Noise Contours ..... 13
- Figure 4-1. History of Monitored CNEL Noise Levels (1989 – 2022) ..... 14

**TABLES**

- Table 3-1. Monitored CNEL Noise Levels at Each NMT ..... 9

## 1 INTRODUCTION

Community Noise Equivalent Level (CNEL) noise contours for calendar year 2022 were developed using the calendar year 2022 noise monitoring and operations data for Santa Monica Municipal Airport (SMO). The methodology used for the calendar year 2022 CNEL noise contours has been updated to reflect current noise monitoring data and the use of the Federal Aviation Administration's (FAA) Aviation Environmental Design Tool (AEDT) noise model.

This report contains four major sections including this introduction. Section 2 describes the methodology used for the generation of the CNEL noise contours and report. Section 3 describes the existing airport noise exposure in the vicinity of SMO, including the calendar year 2022 CNEL noise contours. Section 4 presents historical noise monitoring data.

## 2 METHODOLOGY

### 2.1 BACKGROUND

The methodology used here for describing the existing airport noise exposure in terms of CNEL rely heavily on noise monitoring made by the airport's permanent Noise and Operations Monitoring System (NOMS) and noise modeling. The airport noise exposure is commonly depicted in terms of lines of equal noise levels, or noise contours. The noise contours are supplemented in this report with specific noise monitoring data at the six permanent Noise Monitoring Terminals (NMTs) on the ground. The noise model used to generate the noise contours is described in the following section below.

### 2.2 NOISE MODELING

Noise modeling is a very key element of generating noise contours. Generating accurate noise contours is largely dependent on the use of a reliable, validated, and updated noise model. It is imperative that the noise contours be accurate for the meaningful analysis of airport noise. The noise contours as part of this report were generated using the FAA's AEDT Version 3e.<sup>1, 2</sup>

FAA's AEDT is a software system that models aircraft performance in space and time to estimate fuel consumption, emissions, noise, and air quality consequences. AEDT has an extensive

---

<sup>1</sup> U.S. Department of Transportation, Federal Aviation Administration. AEDT Website. Available: [https://aedt.faa.gov/3e\\_information.aspx](https://aedt.faa.gov/3e_information.aspx), Accessed on May 11, 2023.

<sup>2</sup> The original AEDT (Version 2a) was released for use on February 15, 2014. AEDT Version 3e was released for use on May 9, 2022.

database of civilian and military aircraft noise characteristics and incorporates advanced plotting features. AEDT requires the input of the following types of data:

- Physical description of the airport layout
- Aircraft operations
- Aircraft noise and performance characteristics
- Runway utilization
- Flight tracks
- Meteorological
- Terrain

### 3 EXISTING AIRPORT NOISE EXPOSURE

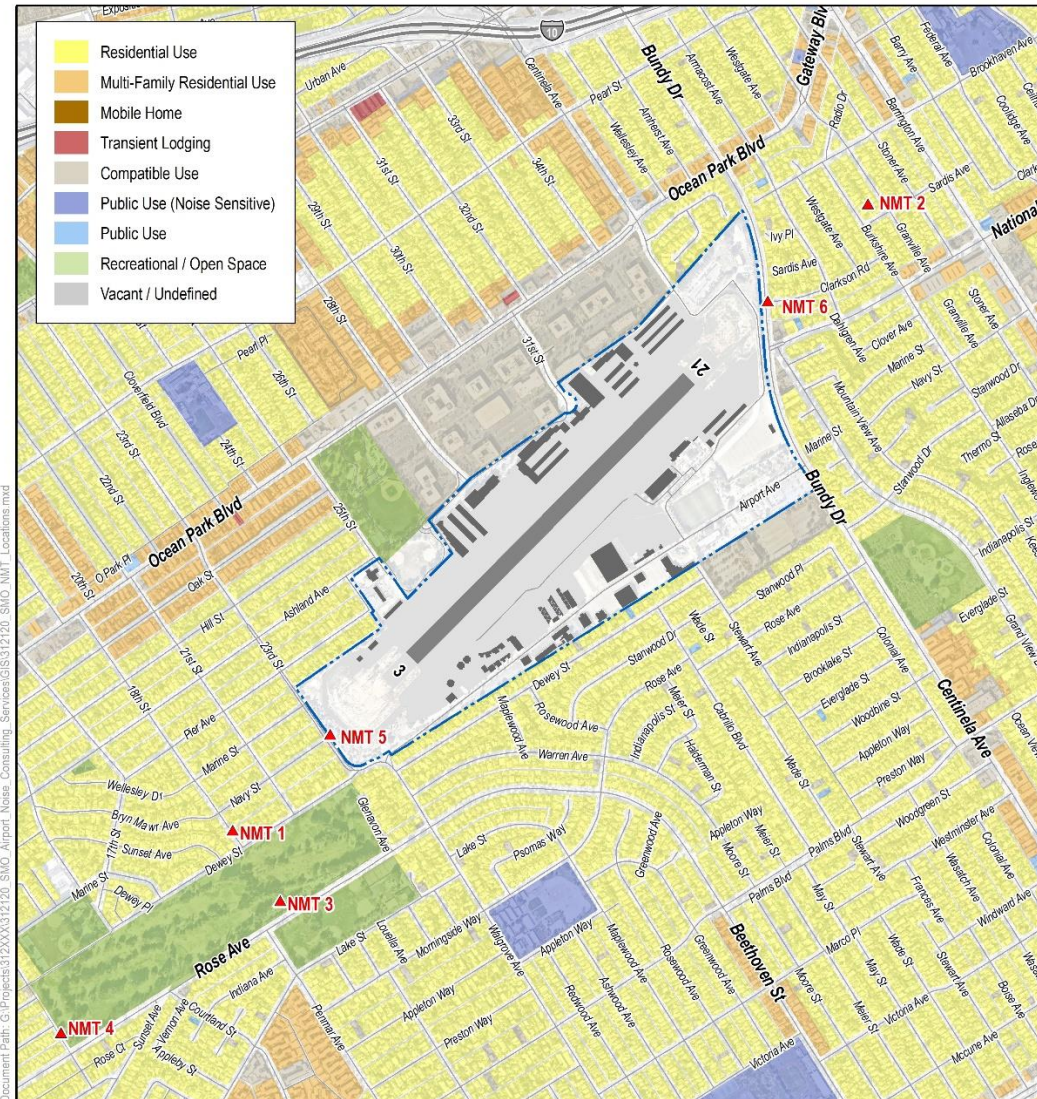
#### 3.1 BACKGROUND

SMO serves as a General Aviation (GA) airport. The use of the Airport is heavily regulated as a result of its limited area and facilities, environmental sensitivity of the local area, and because of a long history of airport related litigation extending back at least to the 1960's. The operation of SMO is regulated by Federal, State, and local laws and regulations including the 2017 Consent Decree.

The Airport has a long history of noise analyses and was one of the very early airports to install a permanent NOMS. Extensive data from its NOMS enables accurate noise modeling and prediction of noise levels. Noise data in terms of CNEL is collected at each of the six permanent NMTs, which are presented in Figure 3-1.

The emphasis of the Airport noise abatement program is on regulating and limiting single event noise. This is in response to resident's concerns about high noise levels associated with some aircraft operations at the Airport. SMO is one of the very few airports that limit aircraft single event noise.

Other local airports that limit single event noise include John Wayne Airport, Orange County (SNA), Long Beach Airport (LGB), Torrance Municipal Airport – Zamperini Field (TOA), and Hayward Executive Airport (HWD). The noise limits vary at each of these airports and are difficult to compare; the location of the enforcement NMTs are not located in similar positions to NMTs located at SMO. Estimating the noise limits at all these airports using a common NMT location indicates that SNA and LGB are much less stringent than SMO (both include jet air carrier operations), HWD is about 3 decibels (dB) less stringent than SMO and TOA noise limits are about the same as SMO.



Document Path: G:\Projects\312XXX\312120\_SMO\_Airport\_Noise\_Consulting\_Services\GIS\312120\_SMO\_NMT\_Locations.mxd


▲ NMT Location  
  Airport Property  
 Runways / Taxiways  
 Airport Buildings  
 Highway  
 Major Roads  
 Minor / Local Roads




**Santa Monica  
Municipal Airport**

**Noise Monitoring Terminal Locations**





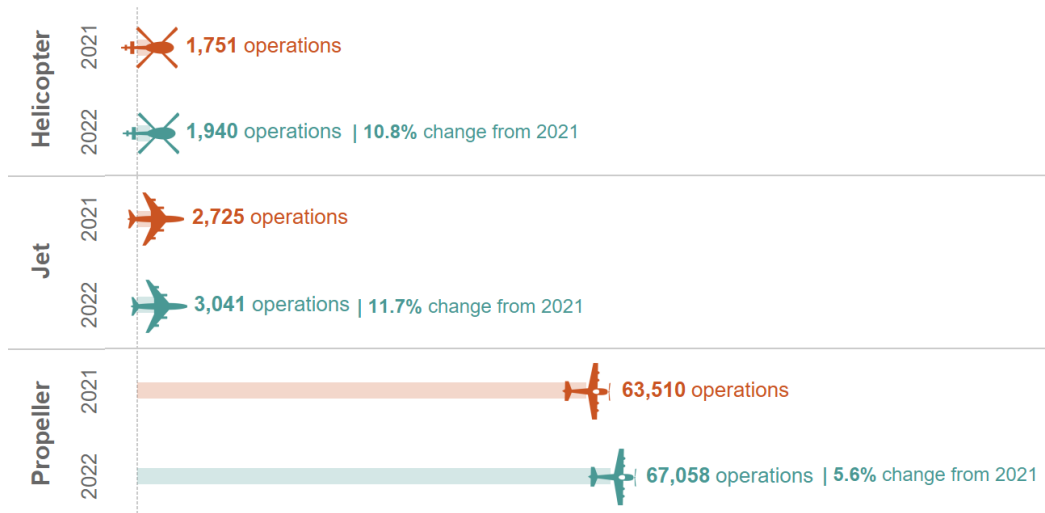


**Figure 3-1. Noise Monitor Terminal (NMT) Locations**  
 Source: SMO and HMMH, 2023.

### 3.2 OPERATIONS DATA

Calendar year 2022 aircraft operations at SMO totaled 72,039; 3,041 were jet aircraft operations, 67,058 were propeller aircraft operations, and 1,940 were helicopter operations. This data was obtained from traffic counts kept by the FAA’s Air Traffic Control Tower (ATCT).

Note that an operation is defined as a departure or arrival. Therefore, 72,039 operations translate into 36,019 departures and arrivals during the calendar year. The total operations represent an increase in operations from the calendar year 2021 of approximately 6.0%. (See Figures 3-2 and 3-3)



**Figure 3-2. Calendar Year 2022 Versus 2021 Operations by Aircraft Category**

Source: SMO and HMMH, 2023.

Of the total operations, 43,026 were itinerant operations and 29,013 were local operations. “Local traffic” is defined as an aircraft that stayed within the Airport’s Class D controlled airspace, generally within 5 nautical miles of the Airport or within the Airport’s traffic pattern. When counting local operations, the departure part of the touch and go is counted as one operation and the landing part is counted as another operation.

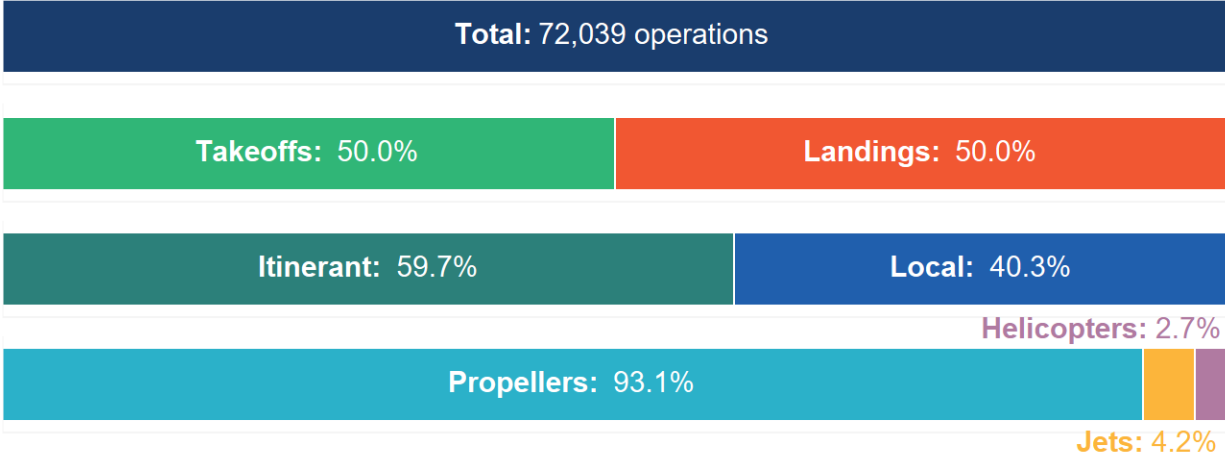


Figure 3-3. Breakdown of Operations

Source: SMO and HMMH, 2023.



### 3.3 FLEET MIX DATA

The types of aircraft operating at SMO were determined using the calendar year 2022 flight information data from the Airports NOMS. All aircraft noise events for the calendar year 2022 were downloaded and analyzed by aircraft type. Aircraft types were divided into the following aircraft categories: jets, piston propellers, turbo propellers, and helicopters. Figure 3-4 lists the top five aircraft types from the Airports NOMS per aircraft category and the corresponding number of operations per aircraft type.

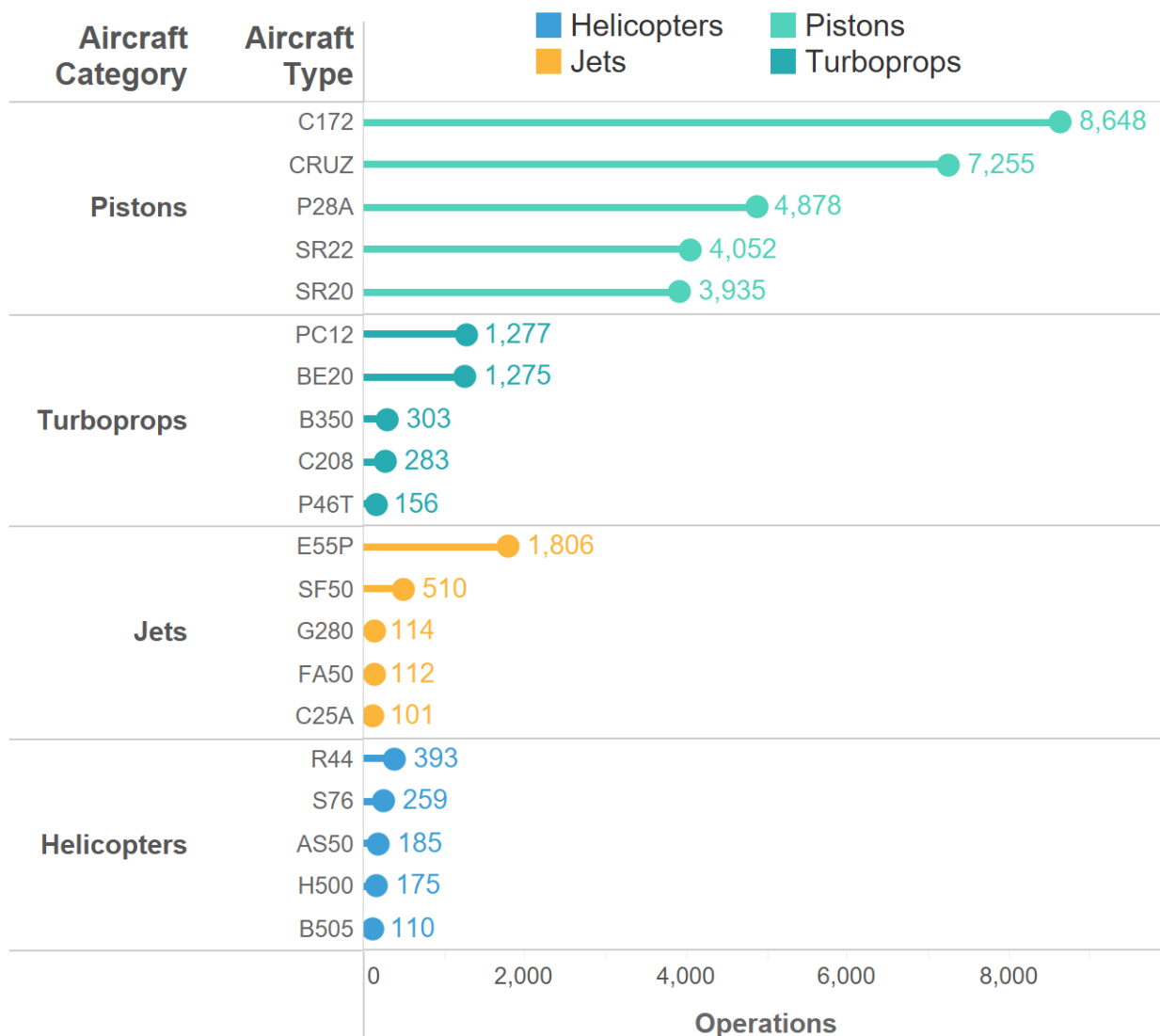


Figure 3-4. Operations for Top 5 Aircraft Types Per Aircraft Category

Source: SMO and HMMH, 2023.

### 3.4 RUNWAY AND FLIGHT TRACK UTILIZATION

The flight tracks at SMO are well established to take advantage of the runway configuration and prevailing wind conditions. Runway 3/21 is approximately 3,500 feet long and is the only runway at the Airport. With winds predominantly coming from the ocean, aircraft typically depart to the west and arrive from the east on Runway 21. Only during Santa Ana wind conditions or other winds that move toward the ocean does the flow reverse with departures to the east and arrivals from the west. On average, east flow occurs approximately five percent of the time.

The day/evening/night distribution of aircraft operations, derived from the Airports NOMS data for the calendar year 2022, is displayed in Figure 3-5. The data logs show 93.1 percent of the operations during daytime hours (7:00 am to 6:59 pm), 5.9 percent during the evening hours (7:00 pm to 9:59 pm), and 1.0 percent of the operations during the night hours (10:00 pm to 6:59 am).

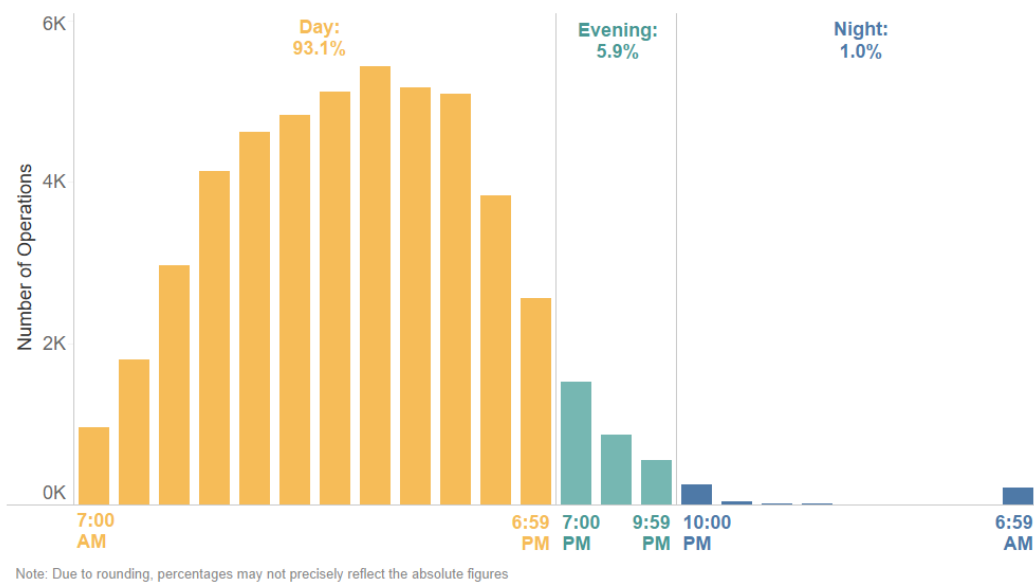


Figure 3-5. Operations by Hour of Day, Evening, and Night

Source: HMMH and SMO, 2023

The entire calendar year 2022 flight tracks from the Airports NOMS were input into the FAA’s AEDT. Figure 3-6 shows a flight track density plot for all departures; Figure 3-7 shows a flight track density plot for all arrivals; and Figure 3-8 shows a flight track density plot for all circuit operations in calendar year 2022.

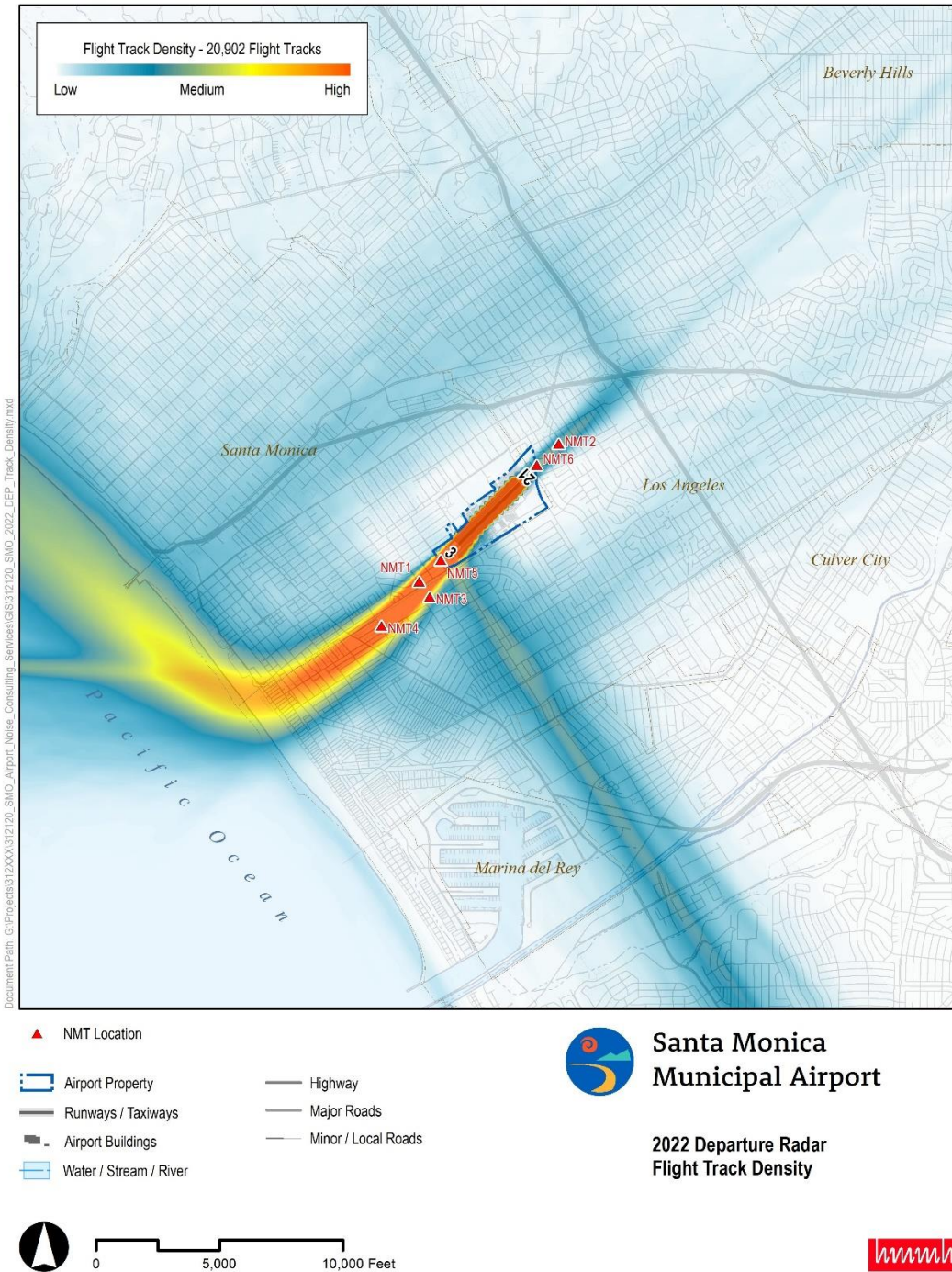


Figure 3-6. Departure Flight Track Density Plot

Source: SMO and HMMH, 2023.

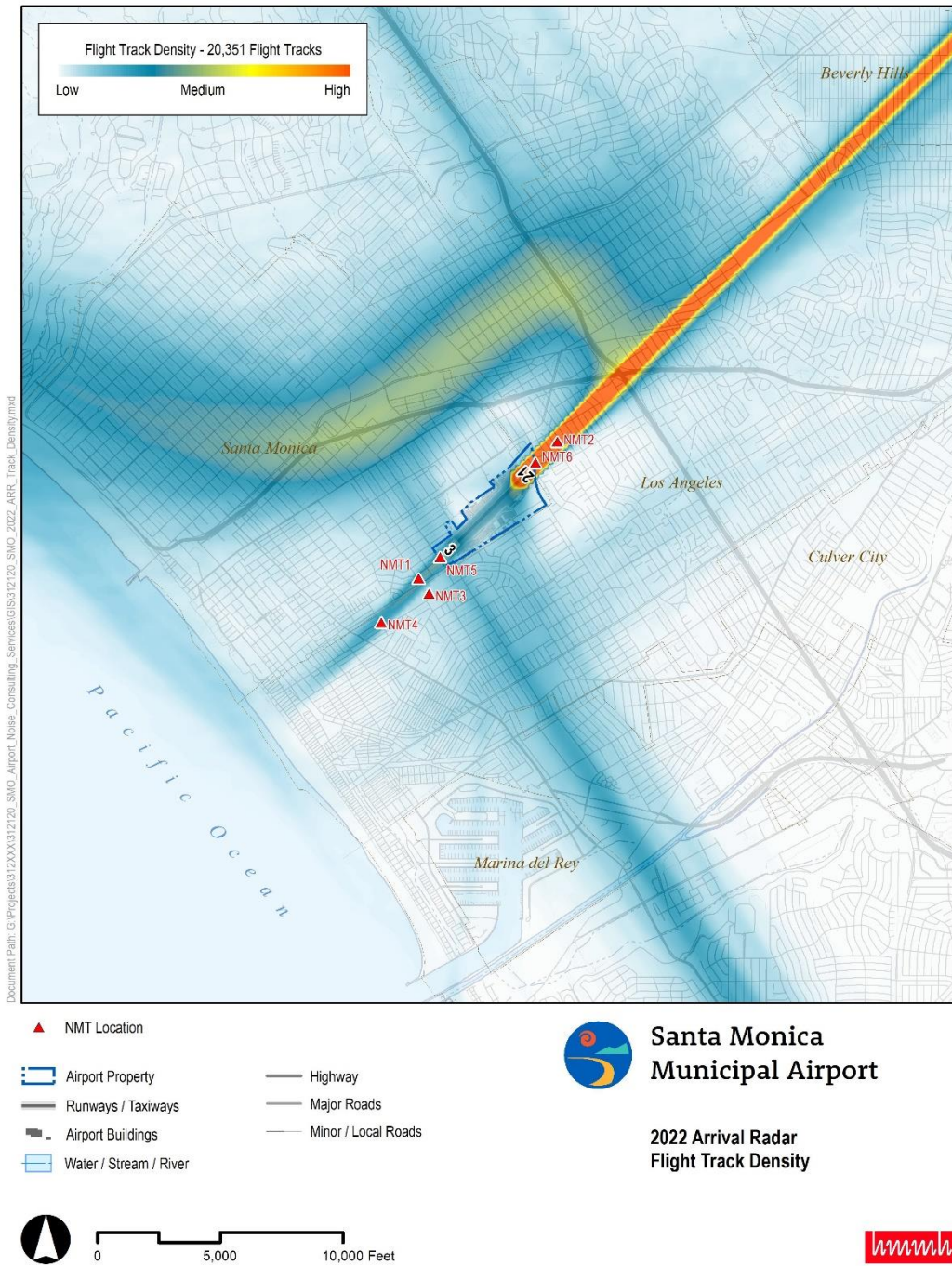


Figure 3-7. Arrival Flight Track Density Plot

Source: SMO and HMMH, 2023.

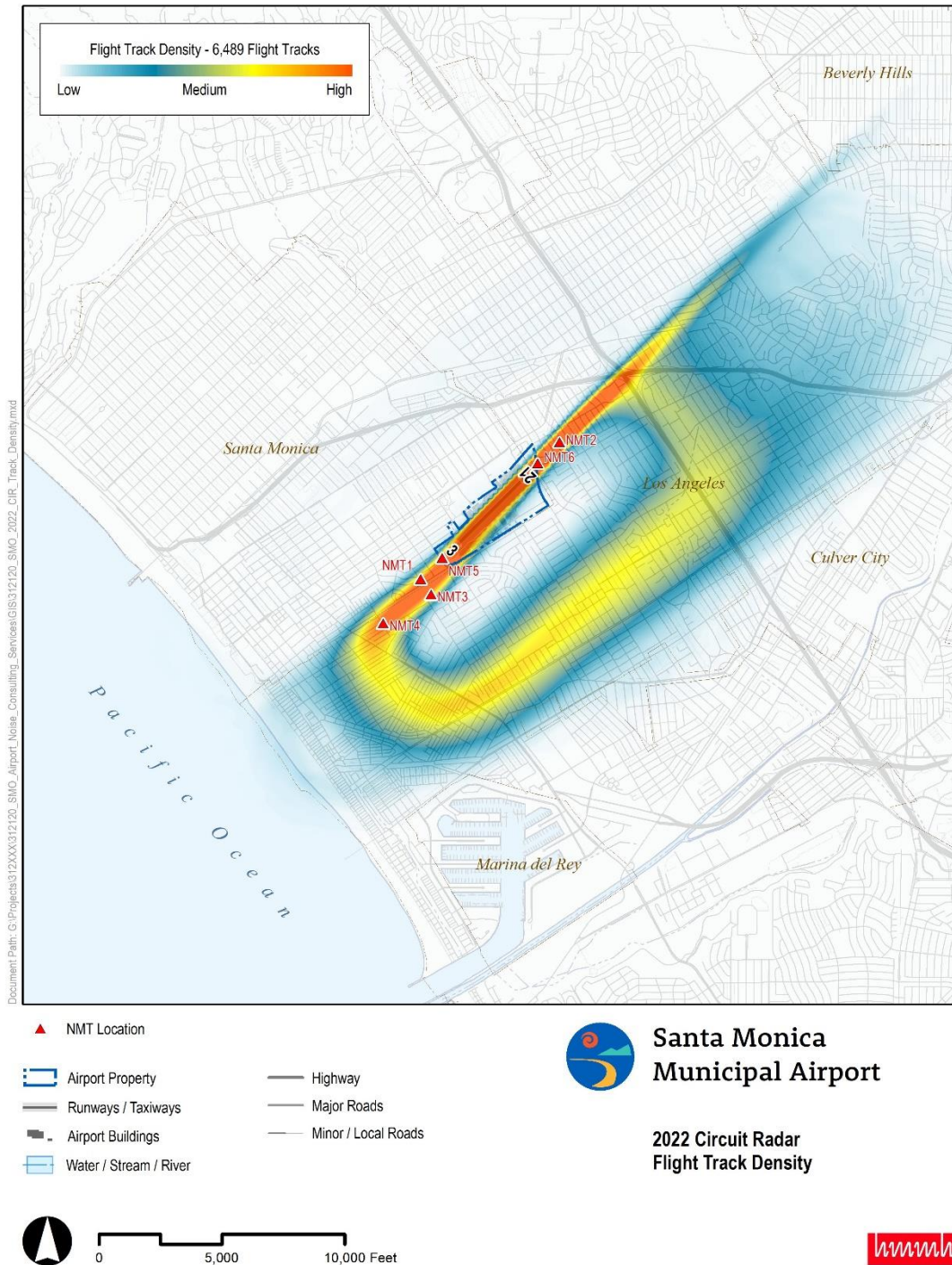


Figure 3-8. Circuit Flight Track Density Plot

Source: SMO and HMMH, 2023.

### 3.5 NOISE MONITORING DATA

The permanent NMT’s were shown in Figure 3-1. The monitored aircraft noise levels in terms of CNEL at each of the NMTs during calendar year 2022 are shown in **Error! Reference source not found.**

**Table 3-1. Monitored CNEL Noise Levels at Each NMT**

Source: SMO and HMMH, 2023.

NMT	Monitored CNEL Noise Level
1	56.3
2	51.9
3	54.7
4	54.1
5	58.2
6	59.3

### 3.6 CNEL NOISE CONTOURS

The CNEL noise contours used to depict existing noise exposure at SMO were generated using AEDT Version 3e. The 60, 65, and 70 dB CNEL noise contours are presented in Figure 3-8. The noise monitored aircraft CNEL noise levels for calendar year 2022 were utilized to validate the modeled CNEL noise levels at each NMT.

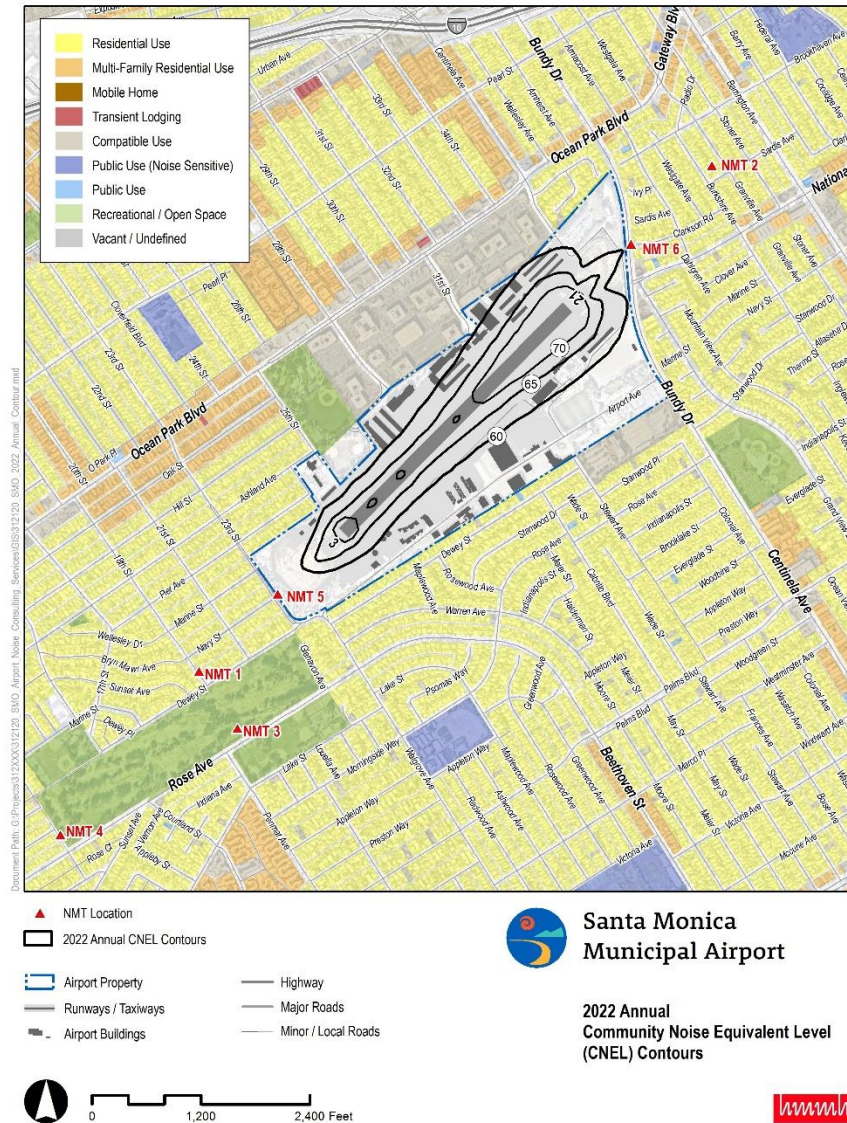


Figure 3-9. Calendar Year 2022 CNEL Noise Contours

Source: SMO and HMMH, 2023.

## 4 HISTORICAL NOISE MONITORING DATA

The original NOMS was installed in the 1970's and upgraded in 1988 and then again in 2017. The historical average CNEL monitored noise data from the NOMS are plotted in Figure 4-1. The increase in noise level in 2011 is due to both an increase in jet and propeller operations from the year 2010 to 2011 as well as retuning of the noise event detection filter in the NOMS. Since 2018, the noise levels have decreased as a result of reduced operations. CNEL noise monitoring recorded prior to 1989 were reported occasionally and therefore are not included in Figure 4-1.

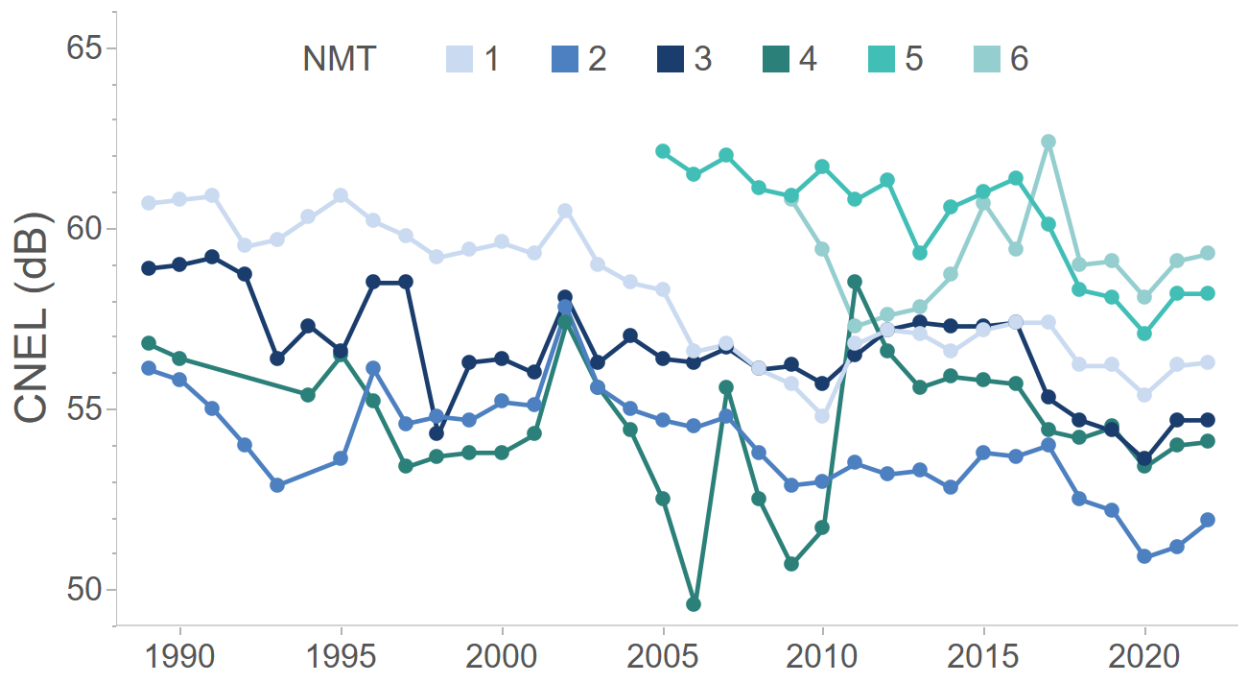


Figure 4-1. History of Monitored CNEL Noise Levels (1989 – 2022)

Source: SMO and HMMH, 2023.

## 5 REFERENCES

U.S. Department of Transportation, Federal Aviation Administration, "Aviation Environmental Design Tool (AEDT), Version 3e User Manual," May 2022.